

THIS INSTRUMENT PREPARED BY
 DAVID P. LINDLEY
 OF
CAULFIELD and WHEELER, INC.
 SURVEYORS - ENGINEERS - PLANNERS
 7900 GLADES ROAD, SUITE 100
 BOCA RATON, FLORIDA 33434 - (561)392-1991
 FEBRUARY - 2013

PRESERVE AT JUNO BEACH

BEING A PORTION OF SECTION 33, TOWNSHIP 41 SOUTH, RANGE 43 EAST,
 TOWN OF JUNO BEACH, PALM BEACH COUNTY, FLORIDA

21

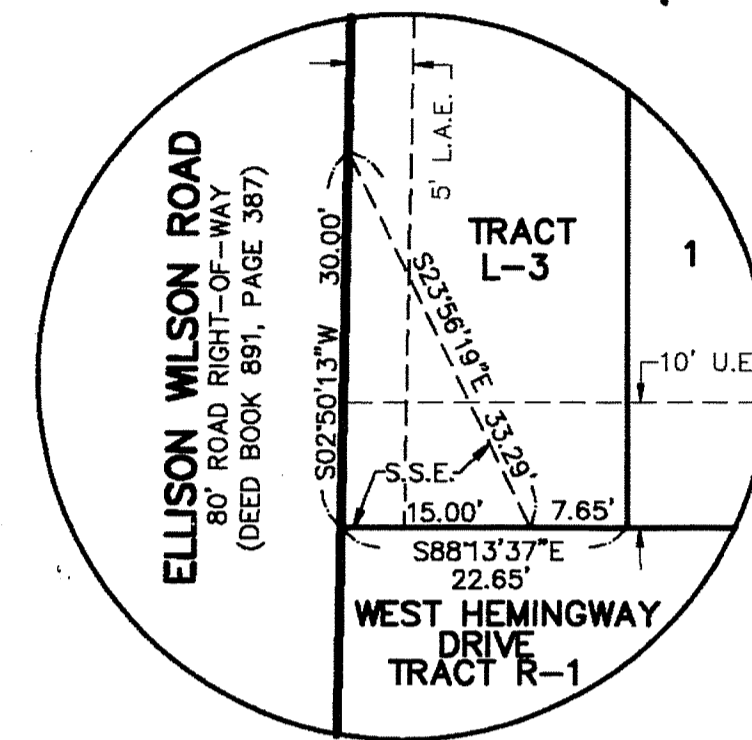
STATE OF FLORIDA
 COUNTY OF PALM BEACH
 THIS PLAT WAS FILED FOR
 RECORD AT _____ M.
 THIS _____ DAY OF _____
 A.D. 201____ AND DULY RECORDED
 IN PLAT BOOK _____ ON
 PAGES _____ AND _____
 SHARON R. BOCK
 CLERK AND COMPTROLLER

BY: _____
 DEPUTY CLERK

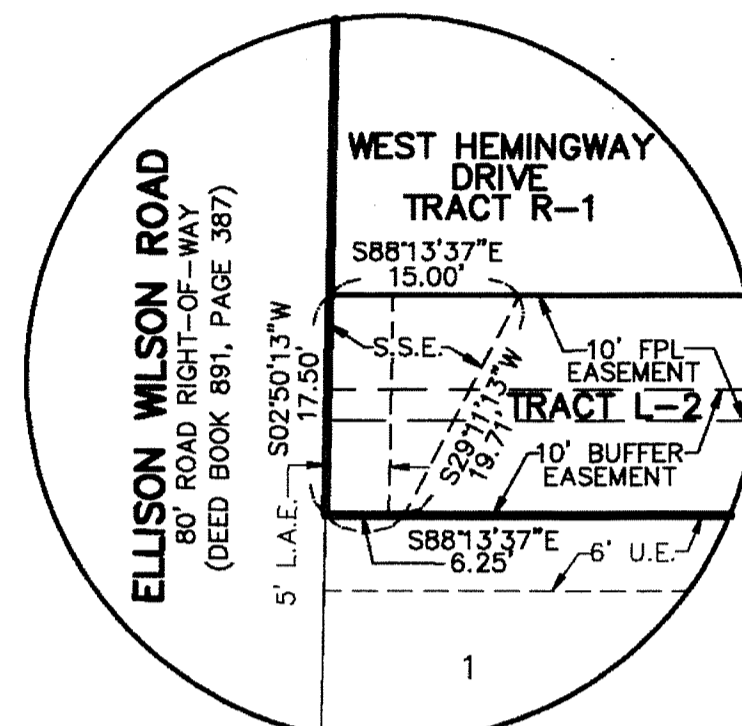
SHEET 2 OF 5

LEGEND/ABBREVIATIONS

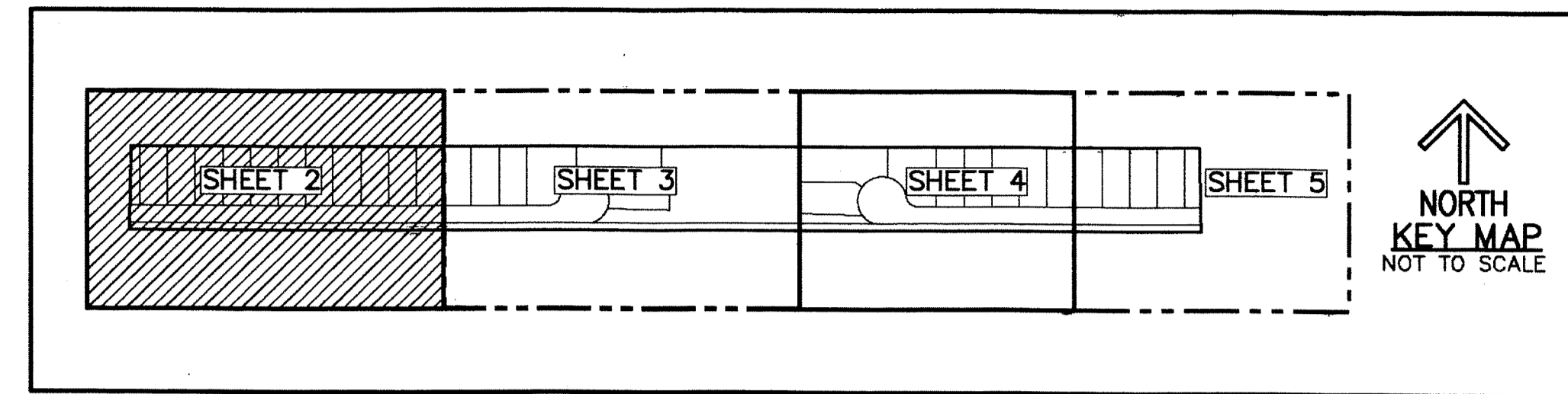
- CL - CENTERLINE
- Δ - DELTA (CENTRAL ANGLE)
- AC - ACRES
- FPL - FLORIDA POWER & LIGHT CO.
- L - ARC LENGTH
- L.A.E. - LIMITED ACCESS EASEMENT
- LB - LICENSED BUSINESS
- NPBCIDIE - NORTHERN PALM BEACH COUNTY IMPROVEMENT DISTRICT INGRESS-EGRESS EASEMENT
- O.R.B. - OFFICIAL RECORD BOOK
- R - RADIUS
- SF - SQUARE FEET
- S.S.E. - SAFE SIGHT EASEMENT
- S.U.A. - SEACOAST UTILITY AUTHORITY
- SWE - SIDEWALK EASEMENT
- ▲ - DENOTES "ZERO" SIDE OF LOT LINE
- SET PRM - INDICATES 4" X 4" X 24" PERMANENT REFERENCE MONUMENT MARKED LB 3591
- SET PCP - INDICATES PERMANENT CONTROL POINT NAIL AND DISK STAMPED LB3591
- U.E. - UTILITY EASEMENT



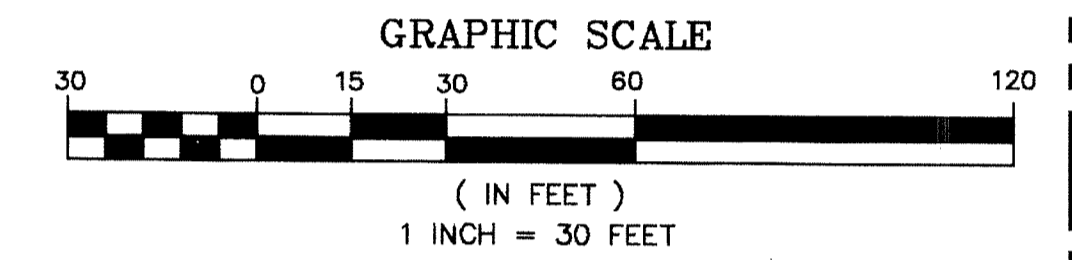
SAFE SITE EASEMENT DETAIL A
 NOT TO SCALE



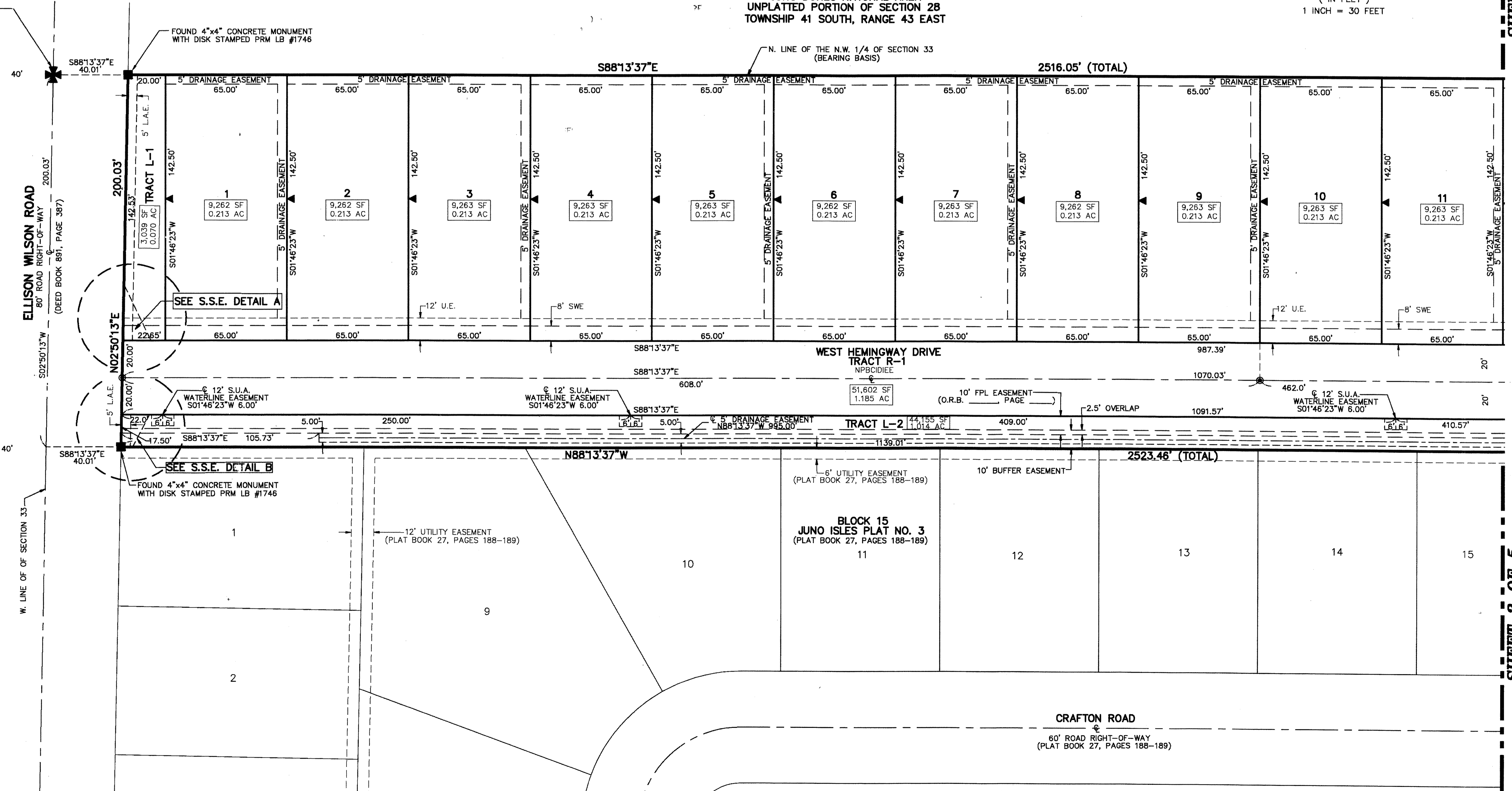
SAFE SITE EASEMENT DETAIL B
 NOT TO SCALE



NORTH
 KEY MAP
 NOT TO SCALE



N.W. CORNER OF SECTION 33
 TOWNSHIP 41 SOUTH, RANGE 43 EAST
 FOUND PALM BEACH COUNTY
 BRASS DISK IN CONCRETE



SHEET 3 OF 5

SHEET 3 OF 5

CRAFTON ROAD
 60' ROAD RIGHT-OF-WAY
 (PLAT BOOK 27, PAGES 188-189)